

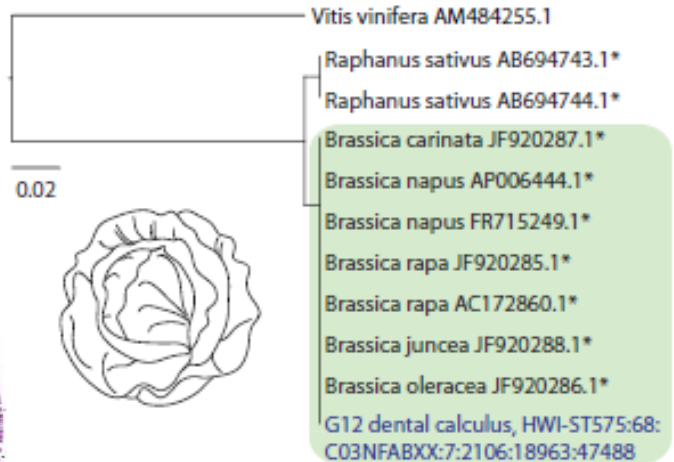
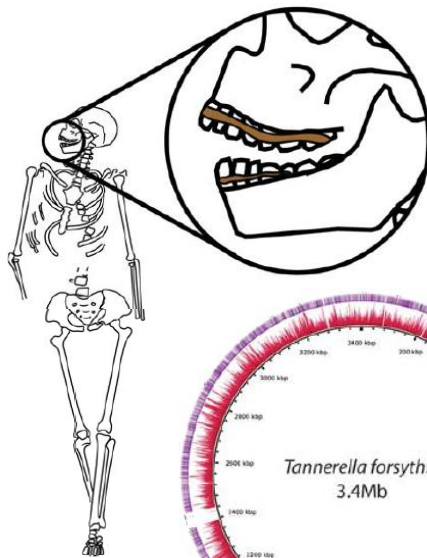
Christina Warinner, Ph.D.

2012 **TED** Fellow



Postdoctoral Research Associate
Molecular Anthropology Laboratories, Stephenson Research and Technology Center
University of Oklahoma

“Dental Calculus: A Novel Biomolecular Reservoir of Ancient Dietary and Health Information”



Monday, February 18th, 2013

HSC Communicore C1-4 Auditorium

11:45 a.m.

Hosted by the students of the Department of Oral Biology

Sponsored by the Department of Oral Biology